

FRA9 93-mm Lerebours et Secretan Refractor Restoration/Adaptations
Telescope, c. 1865 to a Restored Secretan Tripod, c. 1915

Issue:

1. Tripod and mount combination that came with this telescope were a clumsy and inappropriate custom adaptation that was neither Secretan nor the correct period for the telescope.

Action taken:

1. Found a Secretan tripod and fabricated a custom mount using the old original leather-clad Secretan compression bands and associated hardware. This adaptation and restoration transformed this Lerebours et Secretan telescope into a functional and most impressive instrument with all Secretan components except for the custom brass cradle mount and a custom mechanical sighting tube.

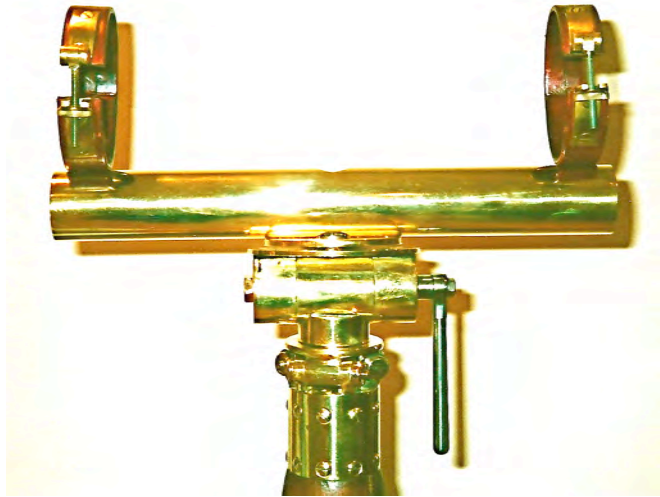


As received



As restored with custom and Secretan adaptations

FRA9 Restoration/Adaptations
Telescope, c. 1865 to a Restored Secretan Tripod, c. 1915



As received



As restored: Used the original leather-clad Secretan compression bands with knurl brass nuts and a custom designed and fabricated brass "trough" mount to adapt the older telescope to a more recent tripod with an aluminum altazimuth pivot mount.

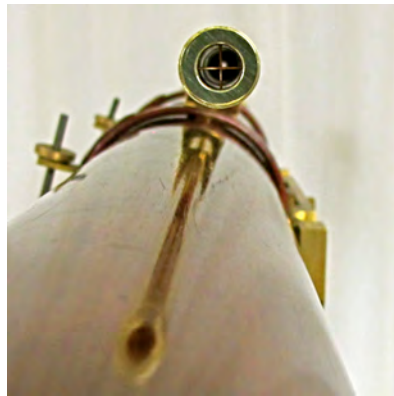
FRA9 Restoration/Adaptations
Telescope, c. 1865 to a Restored Secretan Tripod, c. 1915



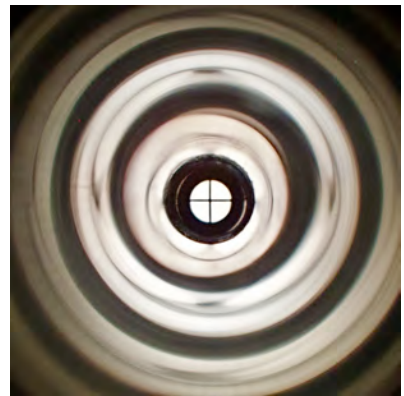
The optical tube assemble rests on two brass cross plates making a secure and attractive mount using only Secretan components except for the brass "trough". Note that the compression bands are hinged on the left side and attached on both sides and to the bottom of the brass trough. A novel mechanical finder was designed and mounted using the empty bolt holes (center photo) on the compression bands.



Height adjuster



Copper "cross hairs"

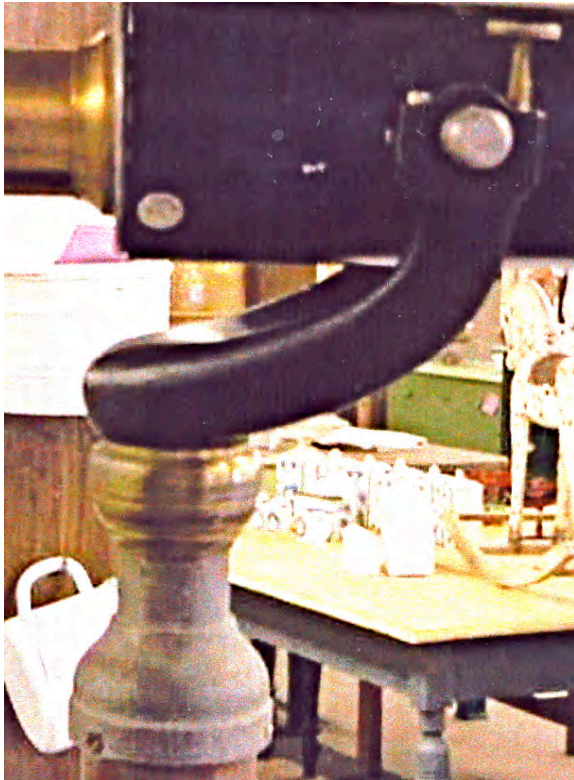


Looking down the sighting tube



Custom designed and fabricated mechanical finder, which is a collapsible and adjustable brass sighting tube with cross hairs.

FRA9 Restoration/Adaptations
Telescope, c. 1865 to a Restored Secretan Tripod, c. 1915



Before restoration

After restoration/adaptation

FRA9 Restoration/Adaptations
Telescope, c. 1865 to a Restored Secretan Tripod, c. 1915



Beautiful "marriage" of Lerebours et Secretan telescope, c. 1865 and Secretan tripod, c. 1915 utilizing a custom tough mount adaptation with the addition of a novel finder sighting tube.